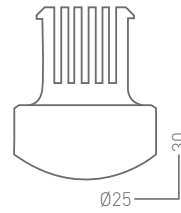
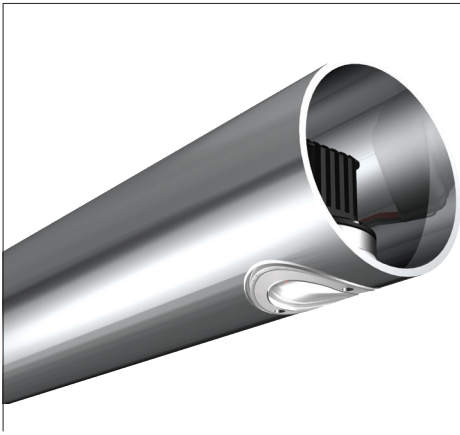


DATA SHEET



KLIKLED® LEDpod

Optics			Lens/Reflector	
Beam Angle			Symmetrical	Asymmetrical
lm	W	mA	System Lumens ¹	
165	1.4	350	118	106
235	2.0	500	167	151

Colour	2200°K · 2700°K · 3000°K · 3500°K · 4000°K · 5000°K · Red · Green · Blue · Amber · PC Amber
CRI	80-85
Binning	2 McAdam Step
Driver	Input 24VDC (42VDC optional) / Output 350 - 500mA Constant Current
Control	DALI · 1-10V · DMX*
Distribution	Symmetrical · Asymmetrical
Tube Size	Ø38 - Ø45mm, Max. wall 3.5mm †
Cut out	Ø25mm
Weight	0.020kg

* DMX control is for overall dimming only and not for individually addressed LEDpods

† Others sizes available upon request

¹ Lumen output based on 4000K

LPOD40 20191122



Carrum Foreshore Precinct – Melbourne, VIC · Kingston City Council · Andrew Lloyd Photography