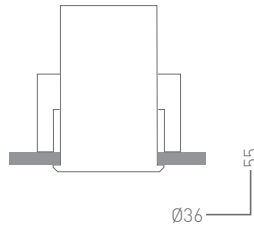
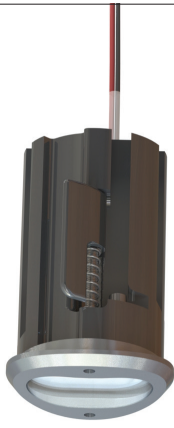


## DATA SHEET



### KLIKLED® LEDpod

Optics		Clear Lens
Beam Angle		asymmetrical
System W	Current mA	System Lumens <sup>1</sup>
2.1	175	179
2.9	250	245
4.1	350	329
6.1	500	425

<b>Colour</b>	2200°K · 2700K · 3000K · 4000K · 5000K · Red · Green · Blue · Amber · PC Amber · RGBW
<b>CRI</b>	80-85
<b>Binning</b>	2 McAdam Step
<b>Driver</b>	Input 24VDC (42VDC optional) / Output 175 - 500mA Constant Current
<b>Control</b>	DALI · 1-10V · DMX*
<b>Mounting</b>	custom keyed tamper proof mounting screw
<b>Distribution</b>	asymmetrical
<b>Tube Size</b>	RHS min 65mm height, Max. wall 6mm †
<b>Cut out</b>	Ø32mm
<b>Weight</b>	0.088kg

\* DMX control is for overall dimming only and not for individually addressed LEDpods

LPODXL32F 202100303

† Others sizes available upon request

<sup>1</sup> Lumen output based on 3000K