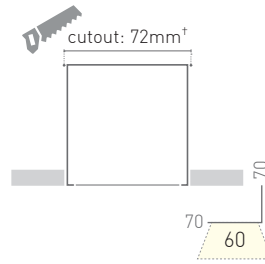
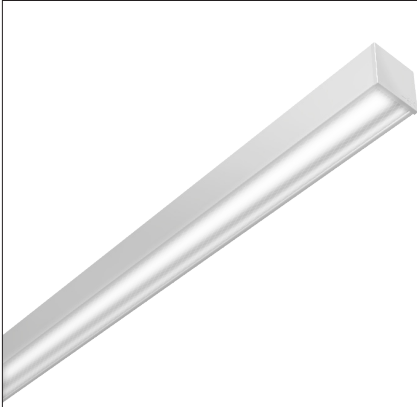


*cut out length = O/A length (inc flange) + 2mm



Direct	LEDoptek				
	LED lumens/m	1000	1500	2250	3350
Delivered Lumens/m	680	1020	1530	2119	3060
Standard CRI	>90				
System W/m					
2700K	10.8	17.3	24.8	36	43.2
3000K	9.1	15.8	23.5	34.5	41
3500K	9.1	15.8	23.4	34.5	41
4000K	9.7	14	22.7	33.4	38.9
Other LED Options	5000K · RGBW · tuneable white · cyanosis · high CRI 98 R9 > 80				
Control	non dim · DALI · Casambi · 0-10V · DMX				
Optics	LEDoptek - symmetric				
Finish	white/black/silver powder coat standard · custom powder coat · clear anodised				
Weight/Pack Size	4.1kg/m - 127 x 159 x (+100mm)				
Mounting	direct fix to overhead structure				
Accessories	mitred bends · T-joins · sensors · emergency recessed LED · others available				
Luminaire Length	any length over 500mm with fully illuminated diffuser				

KAL060BXDRT-LEDoptek-20200331

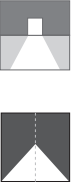
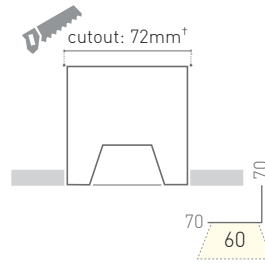


*cut out length = O/A length (inc flange) + 2mm



Direct	LEDmikro				
LED lumens/m	1000	1500	2250	3350	4500
Delivered Lumens/m	767	1185	1732	2690	3472
Standard CRI	>90				
System W/m					
2700K	10.8	17.3	24.8	36	43.2
3000K	9.1	15.8	23.5	34.5	41
3500K	9.1	15.8	23.4	34.5	41
4000K	9.7	14	22.7	33.4	38.9
Other LED Options	5000K · RGBW · tuneable white · cyanosis · high CRI 98 R9 > 80				
Control	non dim · DALI · Casambi · 0-10V · DMX				
Optics	LEDmikro				
Finish	white/black/silver powder coat standard · custom powder coat · clear anodised				
Weight/Pack Size	4.1kg/m - 127 x 159 x (+100mm)				
Mounting	direct fix to overhead structure				
Accessories	mitred bends · T-joins · sensors · emergency recessed LED · others available				
Luminaire Length	any length over 500mm with fully illuminated diffuser				

KAL060BXDRT-LEDmikro-20220404



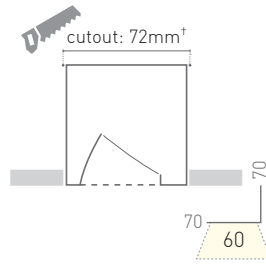
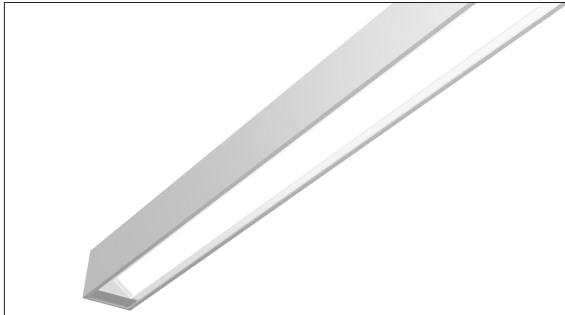
[†]cut out length = O/A length (inc flange) + 2mm



Direct	Ultra High Performance J6 Lensed Louvre			
Module Length ¹	7 cell module 280mm O/A ²			
Lumens	779			
Louvre Colour	White		Black	
Beam Angle	50°	80°	50°	80°
Delivered Lumens	712	707	684	649
Standard CRI	>90			
System Power	7 cell continuous module			
2700K	7.6			
3000K	7.2			
3500K	7.2			
4000K	6.6			
Control	non dim · DALI · Casambi · 0-10V · DMX			
Optics	Ultra High Performance - UHP-J6 50° & 80°			
Finish	white/black/silver powder coat standard · custom powder coat · clear anodised			
Weight/Pack Size	4.1kg/m - 127 x 159 x (l+100mm)			
Mounting	direct fix to overhead structure			
Accessories	mitred bends · T-joins · sensors · emergency recessed LED · others available			
Luminaire Length	Minimum length 420mm with remote gear, lengths over 670mm have integral gear.			

1: photometric file length based on luminous opening

2: minimum 30mm blank cover at ends, can be run continuously



*cut out length = O/A length (inc flange) + 2mm



DIRECT	Asymmetric Wall Washer				
LED lumens/m	1000	1500	2250	3350	4500
Delivered Lumens/m	760	1140	1710	2368	3420
Standard CRI	>90				
System W/m					
2700K	10.8	17.3	24.8	36	43.2
3000K	9.1	15.8	23.5	34.5	41
3500K	9.1	15.8	23.4	34.5	41
4000K	9.7	14	22.7	33.4	38.9
Other LED Options	5000K · RGBW · tuneable white · cyanosis · high CRI 98 R9 > 80				
Control	non dim · DALI · Casambi · 0-10V · DMX				
Optics	Asymmetric Wall Washer				
Finish	white/black/silver powder coat standard · custom powder coat · clear anodised				
Weight/Pack Size	4.1kg/m - 127 x 159 x (L+100mm)				
Mounting	direct fix to overhead structure				
Accessories	mitred bends · T-joins · sensors · emergency recessed LED · others available				
Luminaire Length	any length over 500mm with min 30mm cover at each end plate				

KAL060BXDRT-Asym-20200331-01

KALLI 060 BOX DRT
Asymmetric

