

Removal



Step 1: Start at one end.



Step 2: Use finger nails to grip diffuser.



Step 3: Flex inwards and out



Step 4: Once started carefully tilt diffuser out using two hands to disengage full length.

Replacement



Step 1: Engage one edge full length first.



Step 2: Pivot opposite edge towards body.



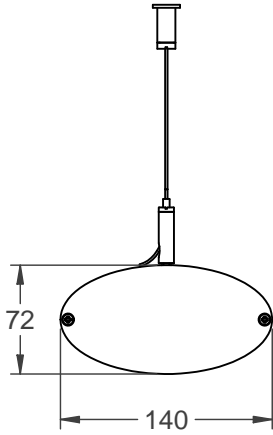
Step 3: Starting at one end clip the diffuser into body.



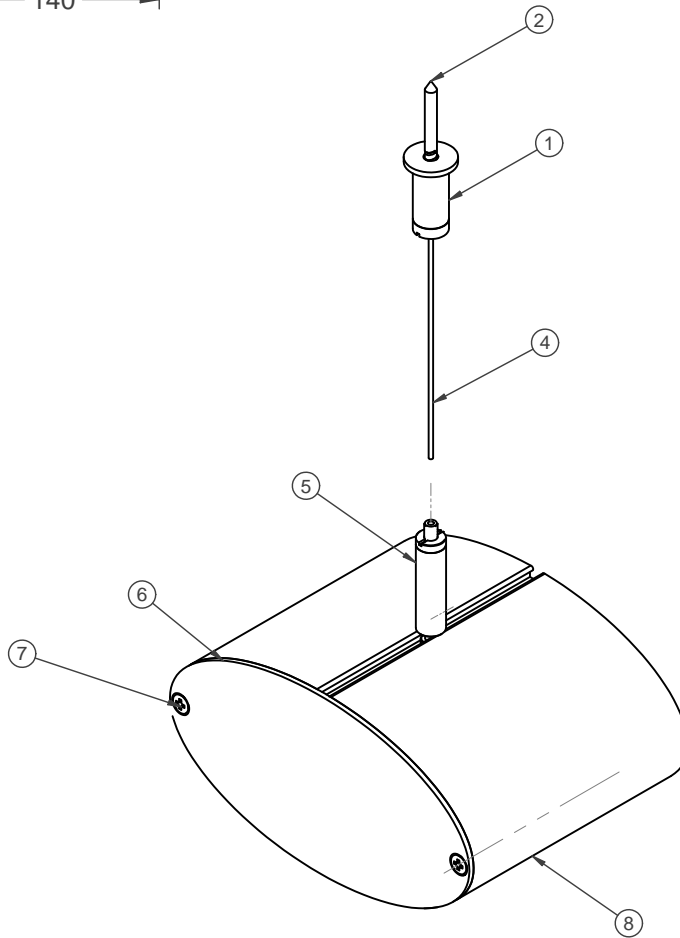
Step 4: Work the diffuser in from one end to the other until fully fitted.

TITLE:			70E Diffuser removal & replacement		Unit 2/2 Southridge St. Eastern Creek P.O. Box 263 Horsley Park NSW 2175 Ph: 02 9851 3300 Fx:02 9851 3200		KLIKsystemsaustralia pty limited	
DRAWING NUMBER:	REV	FILE NAME:	DRAWN BY:	DATE:	SCALE:			
10335-01	A	70E Diff Removal	Paul	22/2/05	na			

70 Elliptical Suspension Wire Instruction



Item Number	Title
1	Suspension Ceiling Barrel
2	8G x 38mm C/S self-tapping screw
3*	Suspension Ceiling Barrel Cap
4	Gripper Wire 1m
5	Gripper Wire Lug
6	70E VF End plate
7	8Gx5/8" Csk 6G Phil Head
8	70E Assembly



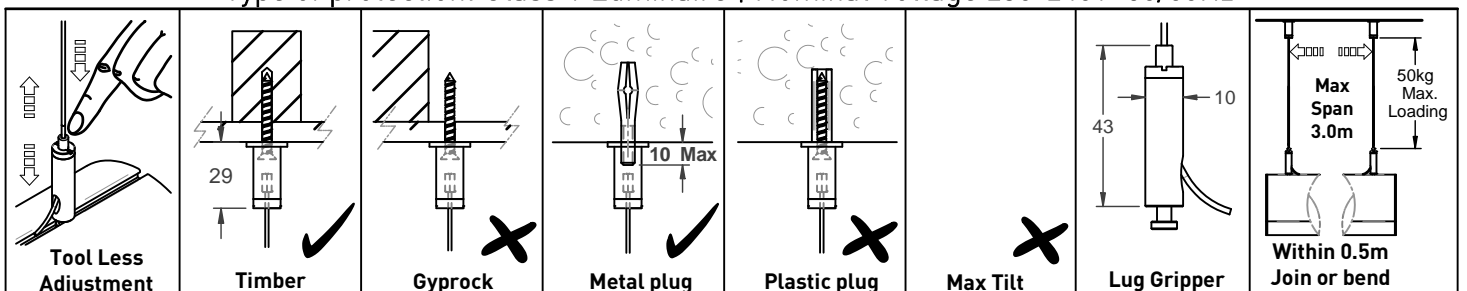
Important

Using appropriate fasteners to suit the mounting surface is the responsibility of the installer.

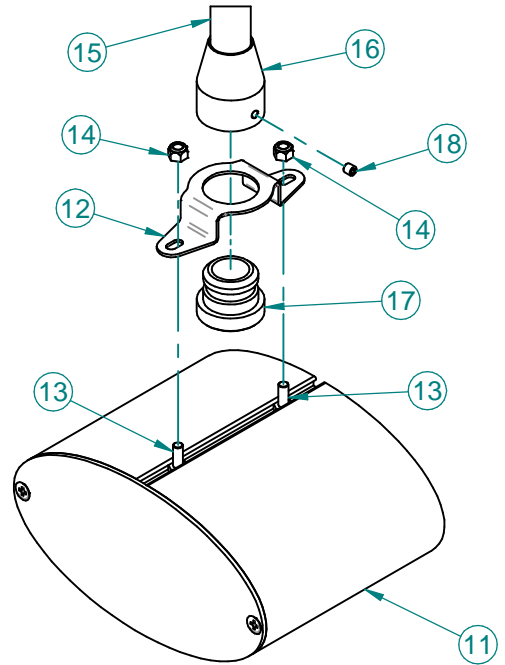
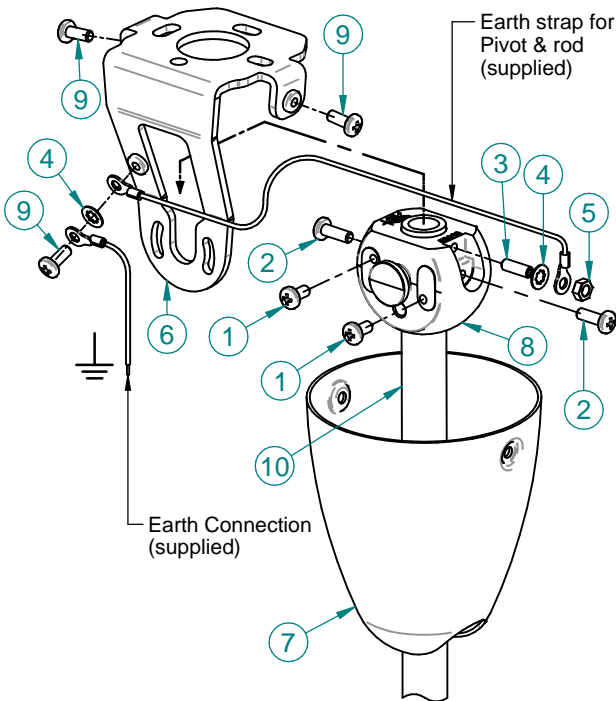
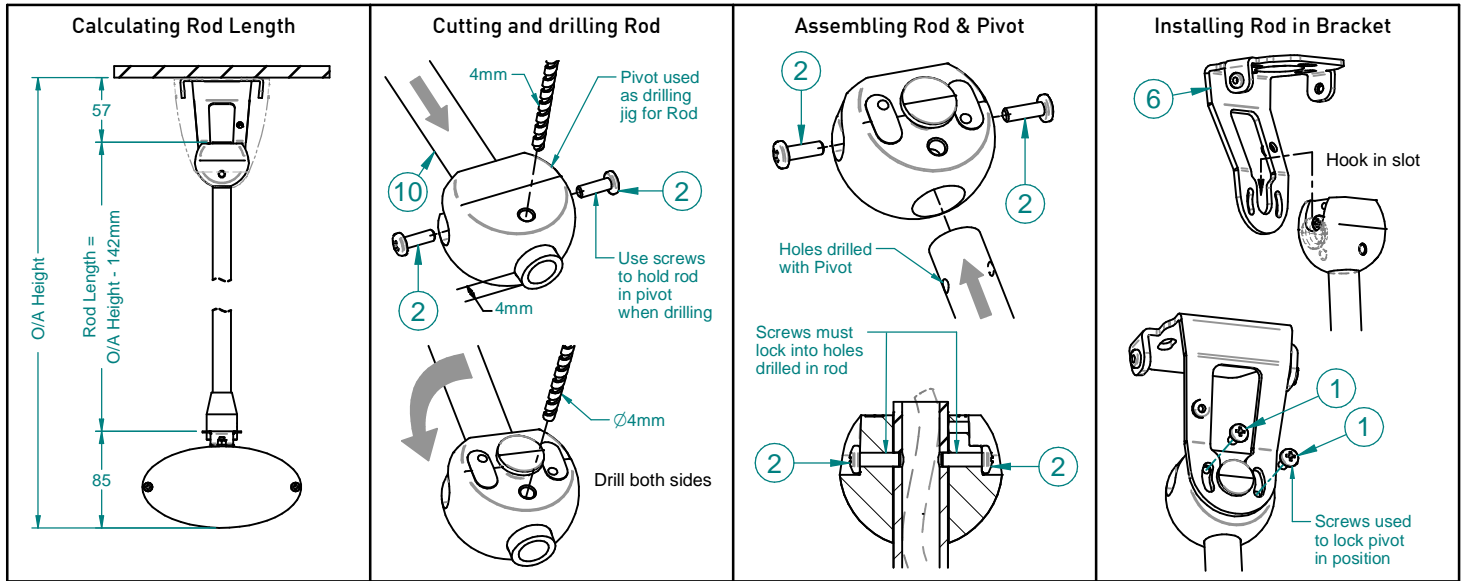
Units should be evenly suspended to avoid the over-loading of suspension wires.

A maximum loading of 50kg is recommended on a single wire at any one time.

Type of protection: Class 1 Luminaire | Nominal Voltage 230-240V 50/60Hz



10337-09-G



Rod to mounting surface assembly			
Item	Part Name	Item	Part Name
1	M4 x 8mm Pan head	6	Ceiling Mounting Bracket
2	M4 Pan head 12mm	7	Bracket Canopy
3	M4 x 12mm Zinc Grub Screw	8	16mm Cast Ball Pivot Clamp
4	M4 internal star washer	9	M4 x 10mm Pan Head Screw
5	M4 Nut	10	16mm Suspension Rod

Rod to system assembly			
Item	Part Name	Item	Part Name
11	70E Assembly	16	16mm SuspRod Adaptor Top
12	16mm Susp groove adaptor	17	16mm SuspRod Adaptor Base
13	M4 x 10mm Hex Head Screw	18	M4 x 4mm Grub Screw
14	M4 Nylock Nut		
15	16mm SuspRod Flared End		

Important

Choosing an appropriate fixing to suit the mounting surface is the responsibility of the installer.

