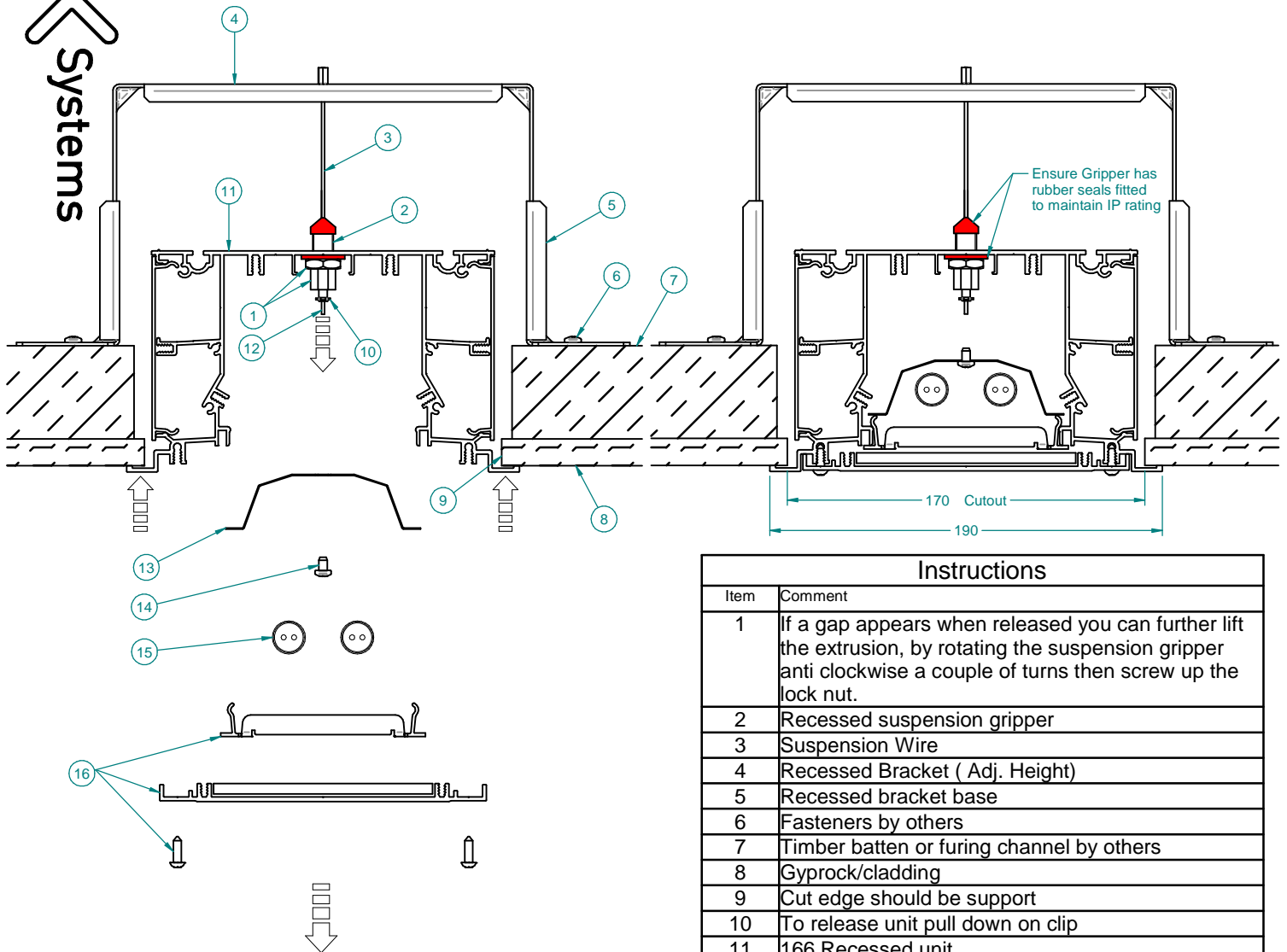


166 Recessed Rail IP gripper bracket suspension instruction



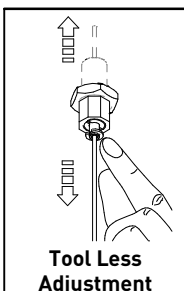
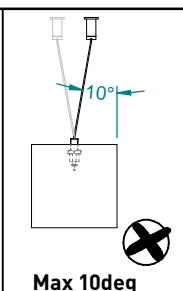
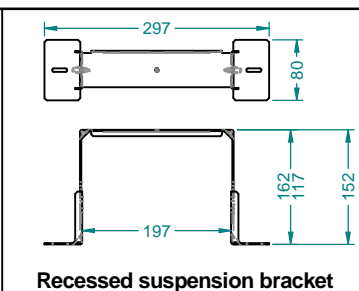
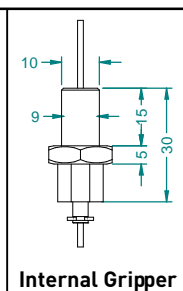
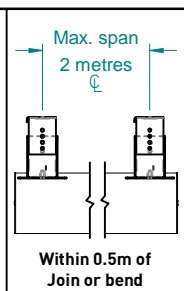
Instructions	
Item	Comment
1	If a gap appears when released you can further lift the extrusion, by rotating the suspension gripper anti clockwise a couple of turns then screw up the lock nut.
2	Recessed suspension gripper
3	Suspension Wire
4	Recessed Bracket (Adj. Height)
5	Recessed bracket base
6	Fasteners by others
7	Timber batten or furring channel by others
8	Gyprock/cladding
9	Cut edge should be support
10	To release unit pull down on clip
11	166 Recessed unit
12	Push Unit up hard while pulling down on susp. wire. READ IMPORTANT INFO BELOW
13	Gripper may be under reflector
14	Release screw from reflector
15	Remove lamp if need be
16	Remove fastners, cover and diffuser

Important

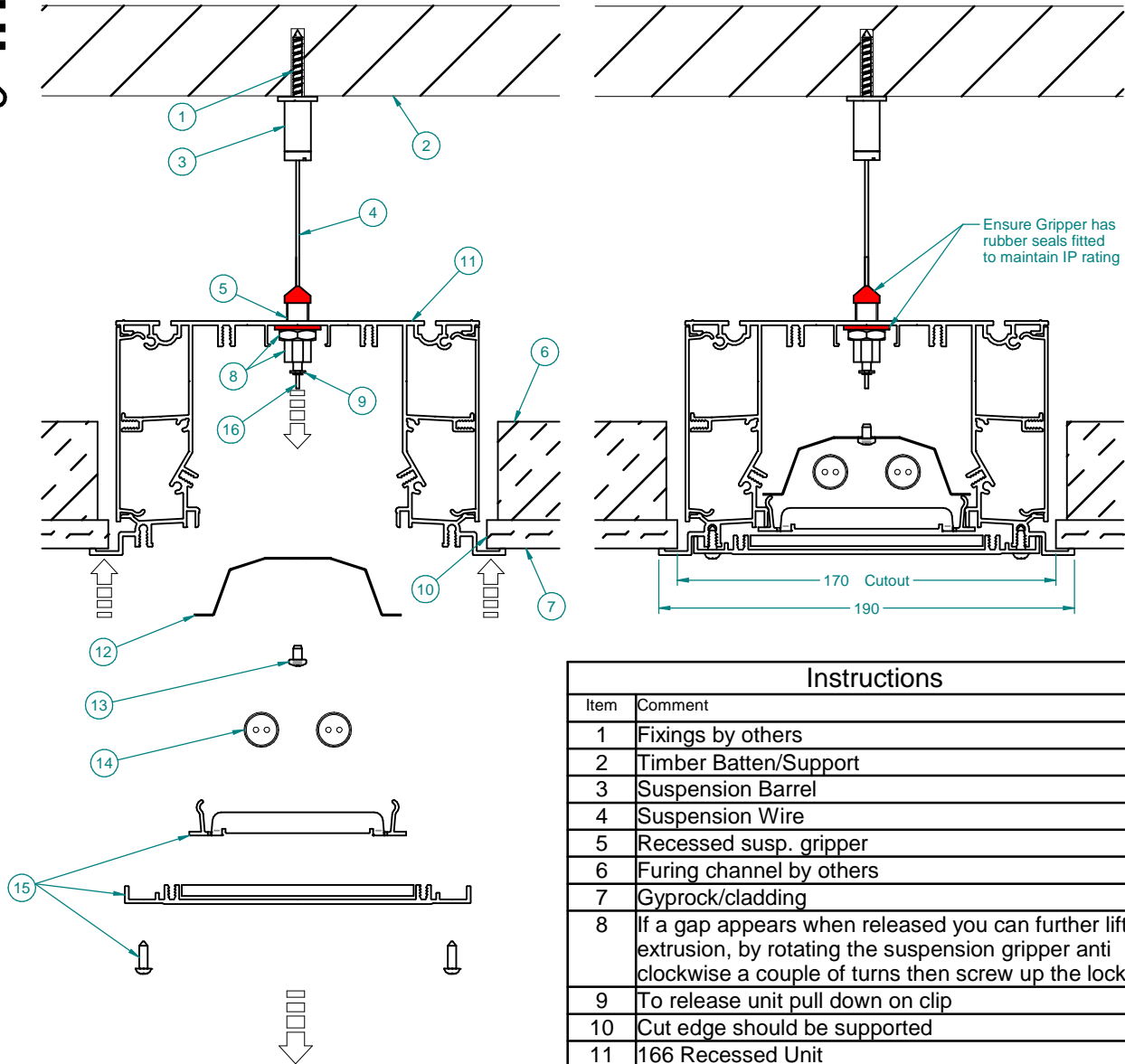
- Using appropriate fasteners to suit the mounting surface is the responsibility of the installer.
- Units should be evenly suspended to avoid the over-loading of suspension wires.
- A maximum loading of 50kg is recommended on a single wire at any one time.

Please ensure that excess suspension wire cannot contact lives wires by either

- insulating excess wire
- cut off excess wire (if wire is cut, the fitting cannot be removed and refitted unless new suspension wire is used)

 <p>Tool Less Adjustment</p>	 <p>Max 10deg</p>	 <p>Recessed suspension bracket</p>	 <p>Internal Gripper</p>	 <p>Max. span 2 metres</p> <p>Within 0.5m of Join or bend</p>	<p>Note: Extrusion body drilled & tapped with M6 thread in nominal suspension locations.</p> <p>These may need to be relocated onsite by installer to suit onsite requirements. Where possible advise Klik at time of order of suspension location requirements.</p>
---	---	---	--	---	--

166 Recessed Rail IP gripper suspension instruction



Instructions	
Item	Comment
1	Fixings by others
2	Timber Batten/Support
3	Suspension Barrel
4	Suspension Wire
5	Recessed susp. gripper
6	Furring channel by others
7	Gyprock/cladding
8	If a gap appears when released you can further lift the extrusion, by rotating the suspension gripper anti clockwise a couple of turns then screw up the lock nut.
9	To release unit pull down on clip
10	Cut edge should be supported
11	166 Recessed Unit
12	Gripper may be under reflector
13	Release screw from reflector
14	Remove lamp if need be
15	Remove fasteners, cover and diffuser
16	Push Unit up hard while pulling down on susp. wire. Trim or insulate wire as per note below

Important

- Using appropriate fasteners to suit the mounting surface is the responsibility of the installer.
- Units should be evenly suspended to avoid the over-loading of suspension wires.
- A maximum loading of 50kg is recommended on a single wire at any one time.

Please ensure that excess suspension wire cannot contact lives wires by either

- insulating excess wire
- cut off excess wire (if wire is cut, the fitting cannot be removed and refitted unless new suspension wire is used)

