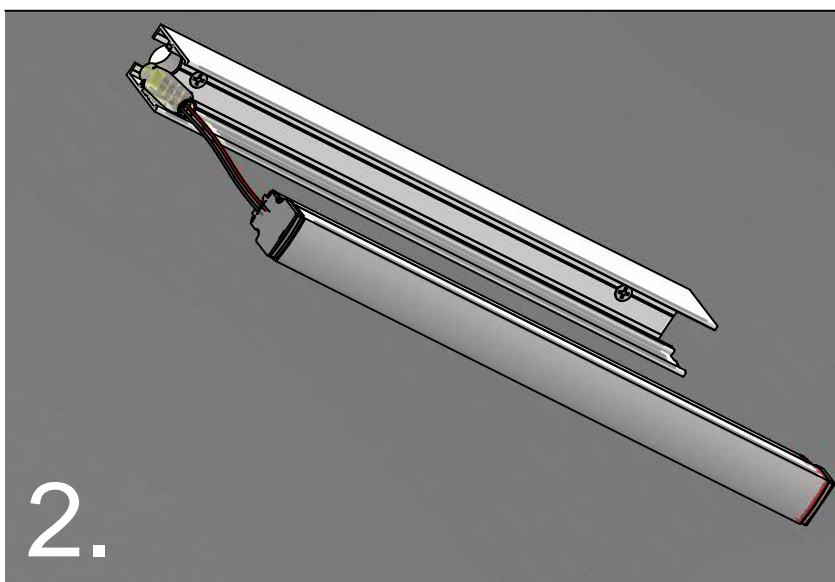


Determine position of fitting and drill appropriate fixing holes and Ø16mm power entry hole.



Connect 24V power leads and snap lamp unit into place. Tap gently until lamp unit is centrally located in body.

## Important

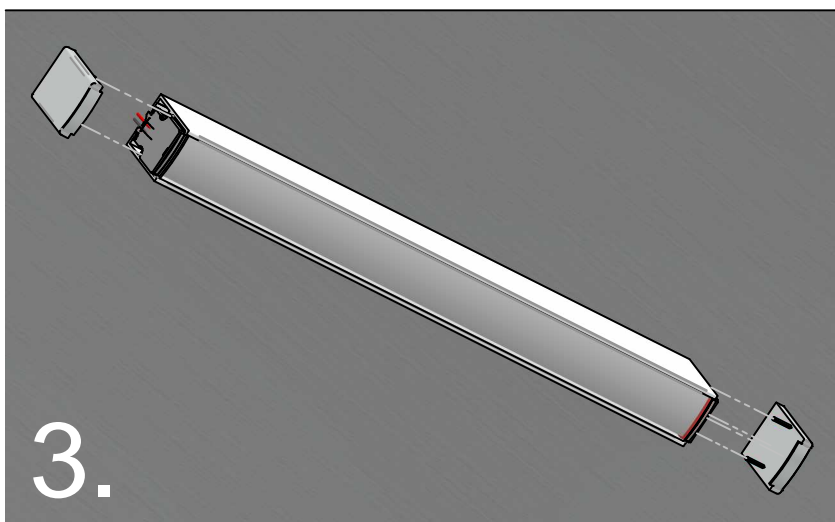
Maximum distance between fixings is 1200mm and 100mm from the ends or corners.

Using appropriate fasteners to suit the mounting surface is the responsibility of the installer.

[www.kliksystems.com](http://www.kliksystems.com)

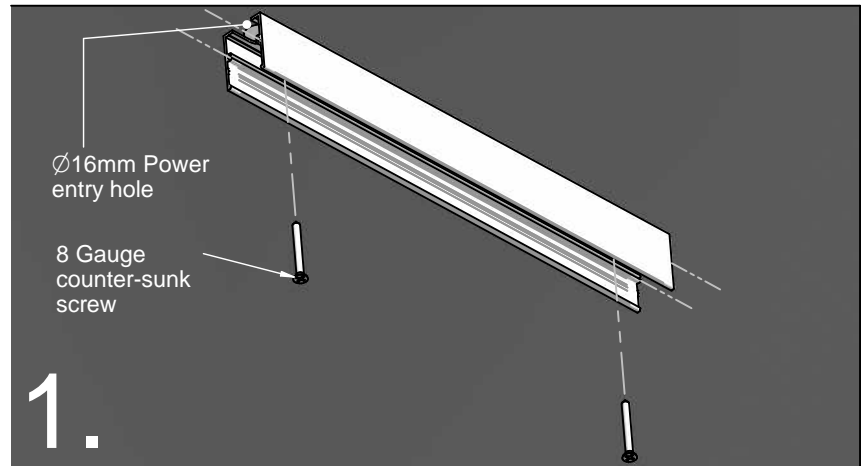
[info@kliksystems.com.au](mailto:info@kliksystems.com.au)

Page: 1 of 1 - 10766-01-A

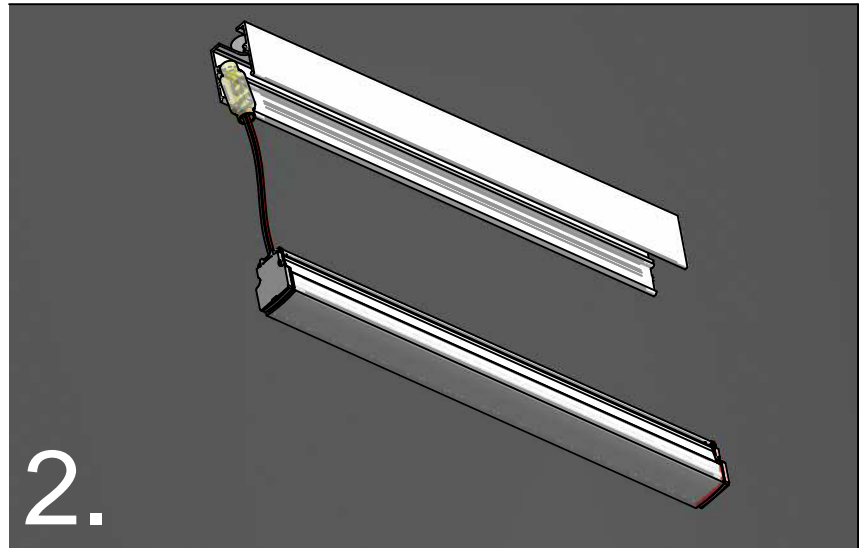


Slide on endcaps to finish.

## LEDSTREAM 37 Surface mount instruction with visible fixings on the endcaps



Determine position of fitting and drill appropriate fixing holes and Ø16mm power entry hole.



Connect 24V power leads and snap lamp unit into place. Tap gently until lamp unit is centrally located in body.

### Important

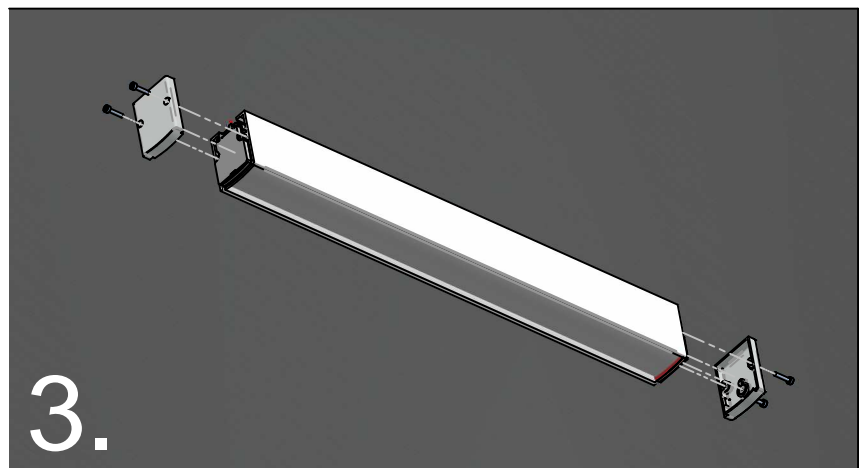
Maximum distance between fixings is 1200mm and 100mm from the ends or corners.

Using appropriate fasteners to suit the mounting surface is the responsibility of the installer.

[www.kliksystems.com](http://www.kliksystems.com)

[info@kliksystems.com.au](mailto:info@kliksystems.com.au)

Page: 1 of 1 - 10766-02-A



Using a 1.5mm Allen Key, screw on endcaps to finish.